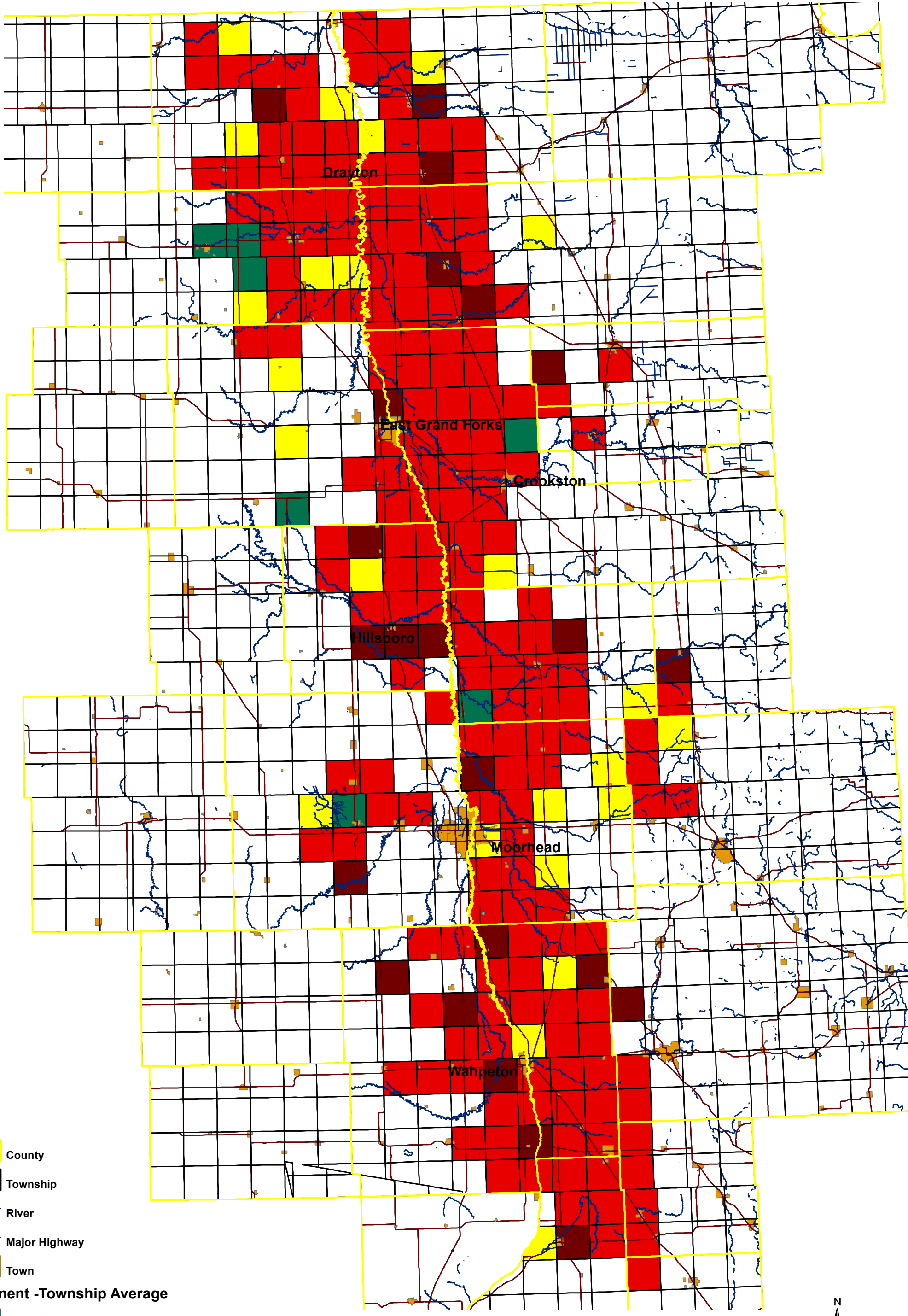


Cercospora Sensitivity/Resistance - 2017 For Eminent EC-50



County
Township

River
Major Highway

Town

Eminent -Township Average

0 - 0.1 (None)
0.1001 - 1.0 (Moderate)
1.0001 - 10.0 (High)
> 10.0 (Very High)

Incidence of sensitivity and resistance are summarized by township

