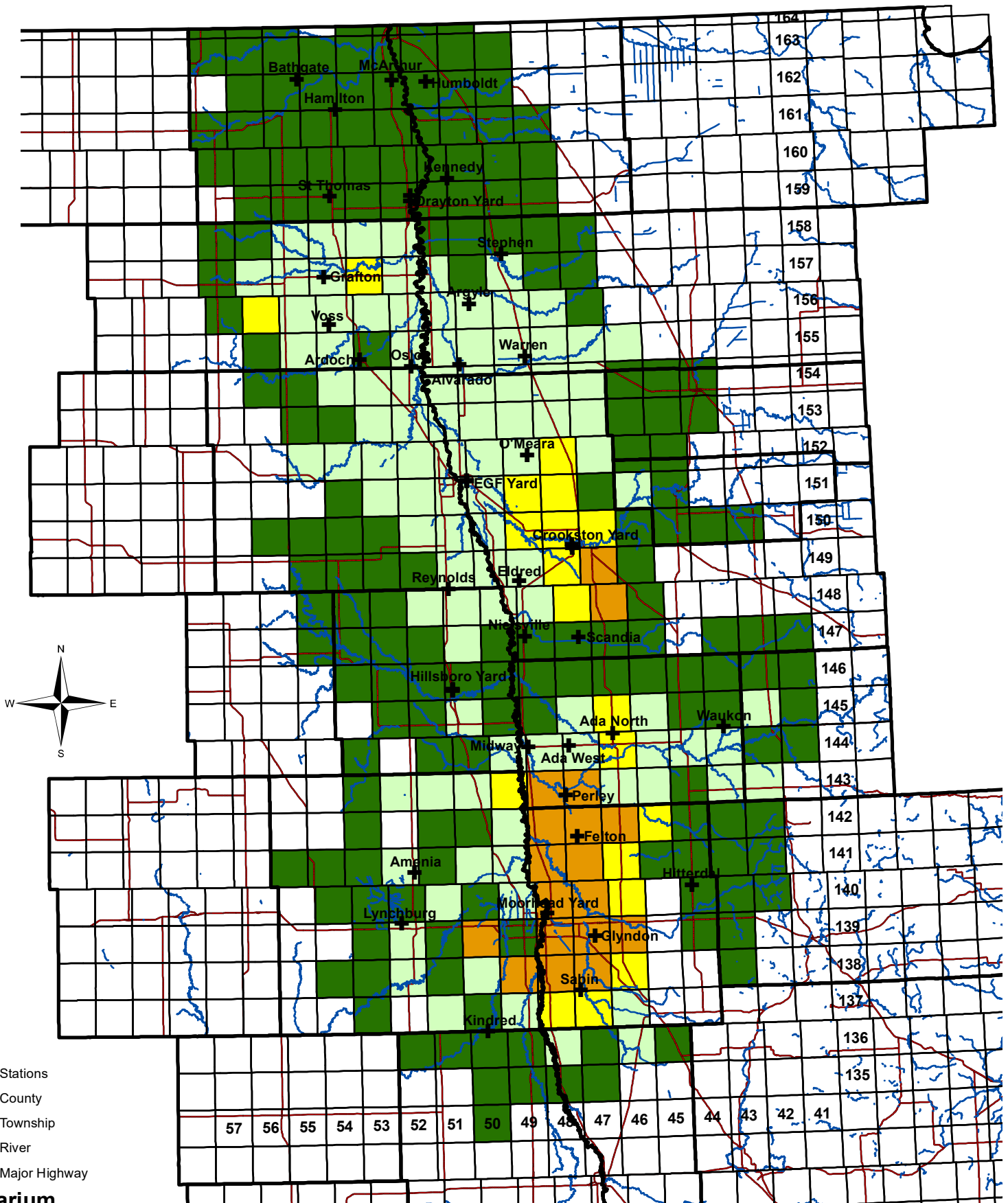


2022 Disease Rating* Fusarium



* The disease ratings are general in nature and may not be representative of all fields in a township

** Township disease ratings are based on current and historical observations of severity. The highest severity rating for a township is maintained since disease presence can remain in the soil for many years. Selecting proper varieties and production practices reduce disease incidence.



Fusarium Management*



Disease Severity	Management Opportunities
Severe	<ul style="list-style-type: none">▪ Plant varieties with a rating of 3.00 or less, the lower the better▪ Use good drainage practices▪ Monitor severity change with each sugarbeet crop▪ Control alternate weed hosts▪ Plant early▪ Rent Fusarium-free land▪ Consider tile drainage▪ Proper crop rotation▪ Emphasize excellent insect control of root maggot, springtails, wireworms
Moderate	<ul style="list-style-type: none">▪ Plant varieties with a rating of less than 4.00, the lower the better▪ Use good drainage practices▪ Monitor severity changes with each beet crop▪ Control alternate weed hosts▪ Plant early▪ Rent Fusarium-free land▪ Proper crop rotation▪ Emphasize excellent insect control of root maggot, springtails, wireworms
Slight	<ul style="list-style-type: none">▪ Plant varieties with a rating of less than 5.00, the lower the better▪ Use good drainage practices▪ Monitor severity changes with each beet crop▪ Control alternate weed hosts▪ Plant early▪ Proper crop rotation▪ Emphasize excellent insect control of root maggot, springtails, wireworms
None	<ul style="list-style-type: none">▪ Prevent disease introduction▪ Control alternate weed hosts▪ Choose any variety - tolerant varieties slow disease development▪ Use good drainage practices▪ Plant early▪ Proper crop rotation

* Management strategies listed in priority order