

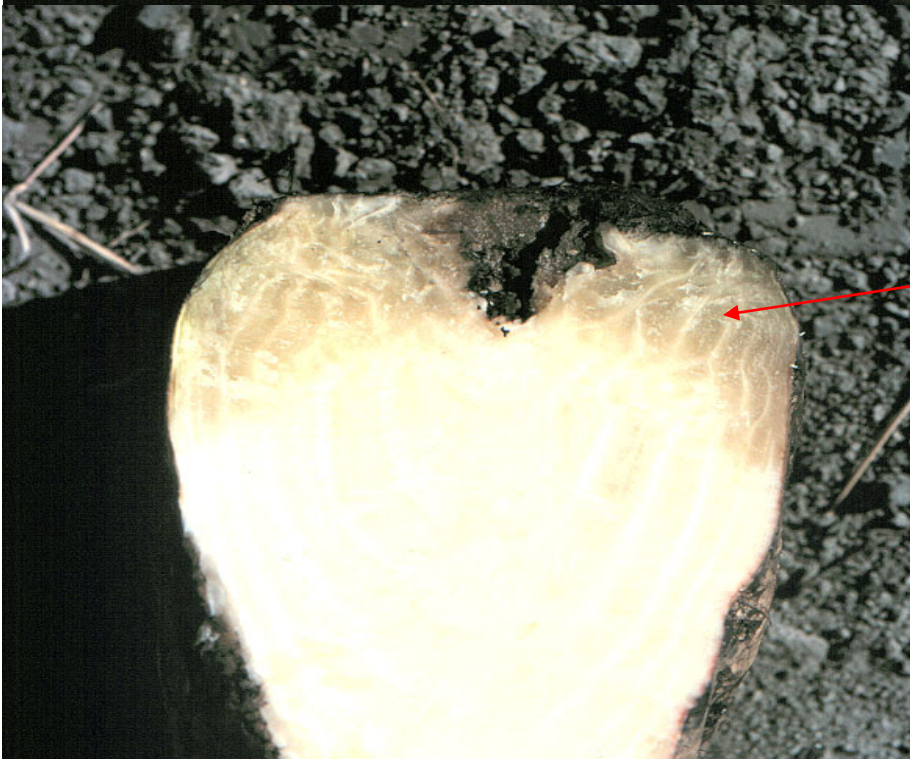
Frost



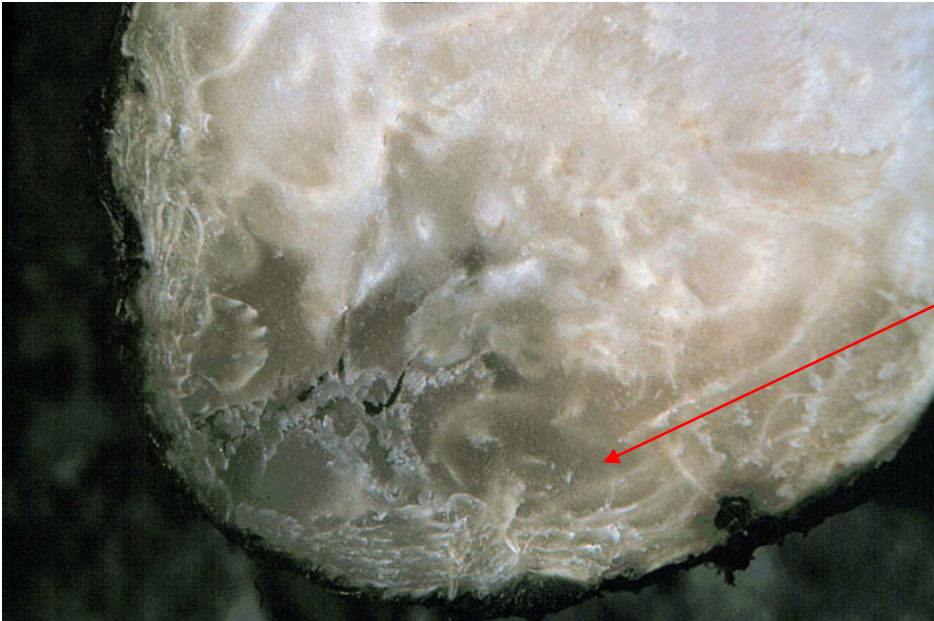
This is how far the topper should be away from the lifter in Frost & Heat Conditions.



Beet without frost



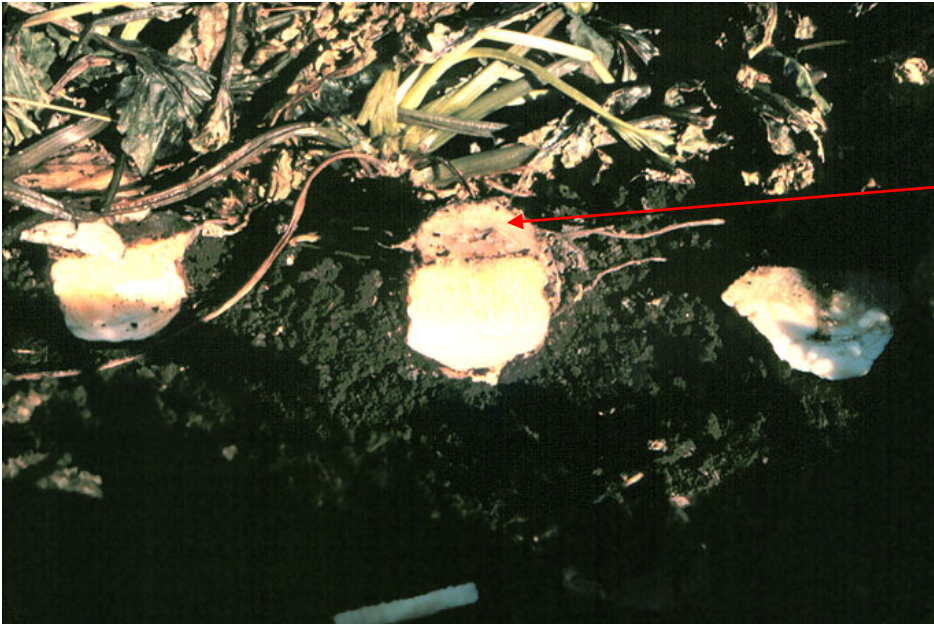
Frozen beet, note yellow discoloration of tissue, this beet would be rejected for storage.



Frozen beet, note yellow discoloration of tissue, this beet would be rejected for storage



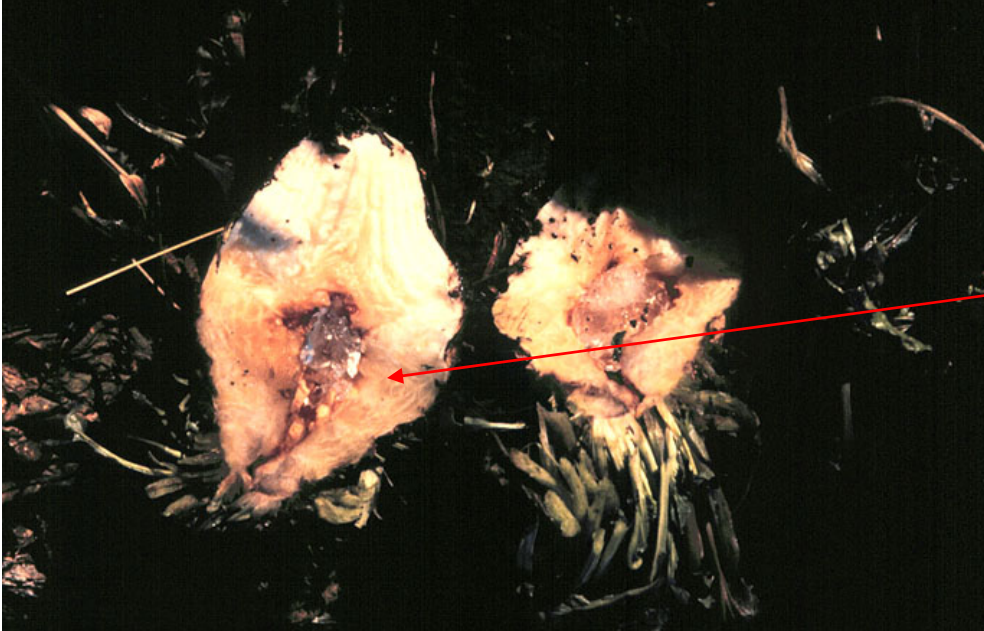
Depletion of canopy due to frost decreasing beet's resistance to future frost & heat conditions.



Beet crown frozen still in ground with canopy.



Larger beet frozen deeper into crown since it is exposed more than others.



Frozen beets, note yellow discoloration & shredded canopy. Canopies that have been shredded have less tolerance for heat & frost than fully intact canopies.